



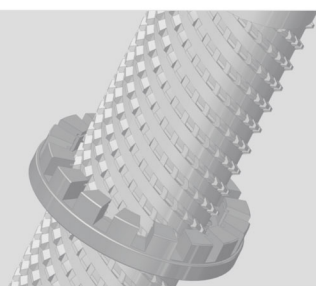
## 伺服螺旋立式内拉床

*Servo spiral vertical internal broaching machine*

*LG88NC 系列*

*LG88NC Series*

- 适用于螺旋花键内齿高精拉削  
*· Suitable for high-precision broaching of internal teeth of spiral spline*
- 伺服驱动  
*· Servo drive*
- 可快速切换不同规格螺旋花键和直齿花键的拉削  
*· The broaching of spiral spline and straight spline with different specifications can be quickly switched.*



项目 ITEM	单位 UNIT	LG8825NC-1700	LG8825NC-2500
额定拉削力 Rated broaching force	kN	250	250
最大行程 Max.stroke	mm	1700	2500
拉削速度 Broaching speed	m/min	1 ~ 12	1 ~ 12
返程速度 Return speed	m/min	1 ~ 12	1 ~ 12
适用拉刀长度 Applicable broach length	mm	1100 ~ 1,930	1500 ~ 2730
最大工件外径 Max. workpiece outer diameter	mm	Φ300	Φ300
主电机功率 Main motor power	kW	34	34
机床总功率 Total power	kW	50	50
机床外形 Machine tool shape	m	6×6.4×6.4	6×6.4×7
机床净重 Net weight	t	30	35